



Ultracolor Plus



Fast setting and drying, high performance, polymer-modified, anti-efflorescence, water-repellent grout for joints from 2 to 20 mm. With DropEffect® and anti-mould with BioBlock® technology

CLASSIFICATION ACCORDING TO EN 13888

Ultracolor Plus is a class CG2 improved (2) cementitious (C) mortar for tile joints (G).

WHERE TO USE

Internal and external grouting of floors and walls in all types of ceramic (double-fired, single-fired, klinker, porcelain, etc.), terracotta, stone material (natural stone, marble, granite, agglomerates, etc.), and glass and marble mosaic.

Some application examples

- Grouting floors and walls in areas subject to intense traffic (airports, shopping centres, restaurants, bars, etc.).
- Grouting floors and walls in residential areas (hotels, private houses, etc.).
- Grouting floors and walls on façades, balconies, terraces and on swimming pools.

TECHNICAL CHARACTERISTICS

Ultracolor Plus is a mortar made up of a blend of special hydraulic binders, graded aggregates, special polymers, water repellent additives, organic molecules and pigments.

With Ultracolor Plus, the Ultracolor technology based on a special, self-hydrating hydraulic binder which guarantees perfect colour uniformity, is further enhanced by two innovative technologies which are the result of MAPEI research: BioBlock® and DropEffect®.



Ultracolor Plus



Spreading Ultracolor Plus on a floor with a rubber squeegee



Spreading Ultracolor Plus on a wall with a rubber float



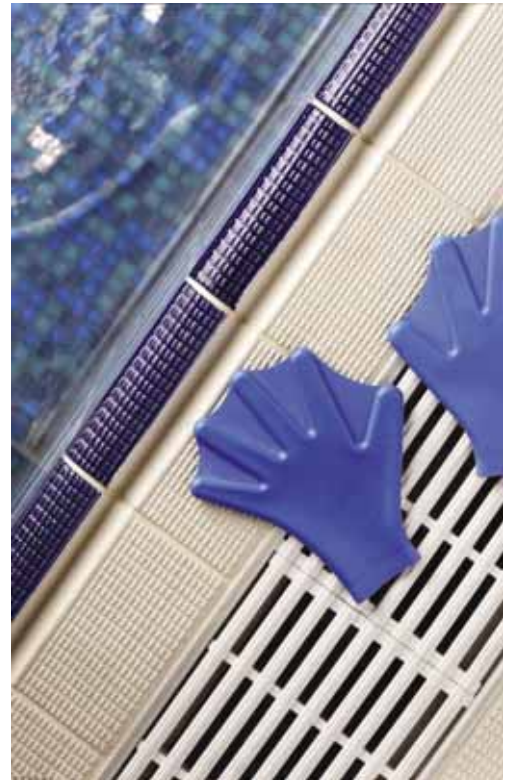
Cleaning and finishing the tile joints on a wall with a sponge

The BioBlock® technology consists of special organic molecules which are distributed uniformly in the micro-structure of the grout, to block the formation at the root of the micro-organisms which cause mould. The DropEffect® technology, with a synergic effect, reduces the absorption of surface water. When it is mixed with water in the proportions recommended and correctly applied, **Ultracolor Plus** forms a grouting mortar with the following characteristics:

- water-repellent and droplet-effect;
- uniform colour and free of staining since **Ultracolor Plus** does not produce efflorescence. From an analysis carried out using an electronic microscope (SEM), note that, compared with a Portland cement-based binder in a normal cementitious grouting mortar, the special cements in **Ultracolor Plus** do not generate the calcium hydroxide (hydrolysis lime) crystals which cause efflorescence during the hydration process;
- colours resistant to ultra-violet rays and atmospheric agents;
- short waiting time before cleaning and easy finishing;
- ready for light foot traffic and for use after a short period of time;
- smooth, compact finished surface, with low water absorbency for easy cleaning;
- shrinkage compensated, therefore free from cracks;
- optimum resistance to abrasion, compression and flexural strength, even after freeze/thaw cycles, and therefore optimum durability;
- good resistance to acids with pH > 3.

RECOMMENDATIONS

- **Ultracolor Plus** does not contain Portland cement and must not be mixed with gypsum or other hydraulic binders; never add water to the mix once it has started to set.
- Never mix **Ultracolor Plus** with salty or dirty water.
- Use the product at temperatures between +5°C and +35°C.
- Carry out grouting only on substrates which are sufficiently dry or have been waterproofed, to avoid a whitish film forming on the surface.
- In order to avoid an uneven colour finish, we do not recommend sprinkling **Ultracolor** powder onto the filled grout joints.
- When resistance to acids or, where extreme cleanliness or sterile conditions are required, use a suitable acid-resistant epoxy grout.



Example of a swimming pool grouted with Ultracolor Plus

- Expansion and movement joints on walls and floors must never be filled with **Ultracolor Plus**. Use a suitable flexible sealant from the MAPEI range.
- The surface of certain tiles or stone material may have micro-porosity or a rough surface. We recommend carrying out a preliminary test to check how easy it is to clean the surface where necessary to apply a protective treatment to the surface, to ensure the grout does not penetrate into the surface porosity of the tiles.
- If an acid-based cleaner is used to clean the joint, we recommend testing the product beforehand to check the resistance of the colour. Always make sure that the joints are thoroughly rinsed down to avoid leaving traces of acid in the joints.

APPLICATION PROCEDURE

Preparing the joints

Grouting may take place when the adhesive is completely set. Make sure that the waiting times indicated in the technical data sheets are followed.

The joints must be clean, free of dust and empty down to at least 2/3 of the thickness of the tiles. Any adhesive or mortar which has seeped into the joints while laying the tiles must be removed while still fresh. With very absorbent tiles, high temperatures or windy conditions, dampen the joints with clean water.

Preparing the mix

While stirring, pour **Ultracolor Plus** into a

TECHNICAL DATA (typical values)

Conforms to standards:

- European EN 13888 such as CG2
- ISO 13007-3 such as CG2WAF
- American ANSI A 118.7 - 1999

PRODUCT IDENTITY

Consistency:	fine powder
Colour:	26 colours from the MAPEI range
Bulk density (kg/m³):	1,400
Dry solids content (%):	100
Storage:	12 months in original packaging in a dry place
Hazard classification according to EC 1999/45:	none. Before using refer to the "Safety instructions for preparation and application" paragraph and the information on the packing and Safety Data Sheet
Customs class:	3824 50 90

APPLICATION DATA (at +23°C - 50% R.H.)

Mixing ratio:	100 parts Ultracolor Plus with 21-23 parts water, dependent on the colour
Consistency of the mix:	fluid paste
Density of mix (kg/m³):	1,980
pH of mix:	approx. 11
Pot life of mix:	20-25 minutes
Application temperature range:	from +5°C to +35°C
Grouting after installation: - on walls bonded with normal adhesive: - on walls bonded with fast-setting adhesive: - on walls with mortar: - on floors bonded with normal adhesive: - on floors bonded with fast-setting adhesive: - on floors with mortar:	4-8 hours 1-2 hours 2-3 days 24 hours 3-4 hours 7-10 days
Waiting time for finishing:	15-30 minutes
Set to light foot traffic:	approx. 3 hours
Ready for use:	24 hours (48 hours for basins and swimming pools)

FINAL PERFORMANCES

Flexural strength after 28 days (N/mm²) (EN 12808-3):	9
Compressive strength after 28 days (N/mm²) (EN 12808-3):	40
Flexural strength after freeze/thaw cycles (N/mm²) (EN 12808-3):	9
Compressive strength after freeze/thaw cycles (N/mm²) (EN 12808-3):	40
Abrasion resistance (EN 12808-2):	700 (loss in mm ³)
Shrinkage (mm/m) (EN 12808-4):	1.5
Water absorption (g) (EN 12808-5) after 30':	0.1
Water absorption (g) (EN 12808-5) after 4 hours:	0.2
Resistance to solvents and oil:	excellent
Resistance to alkalis:	excellent
Resistance to acids:	good resistance to acids with pH > 3



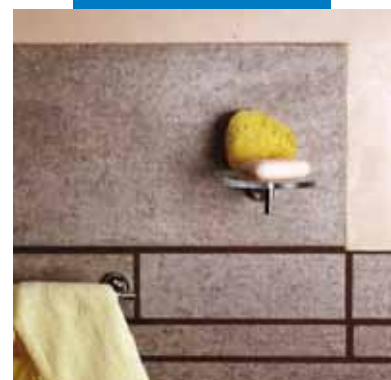
Spreading **Ultracolor Plus** on a wall with a rubber trowel



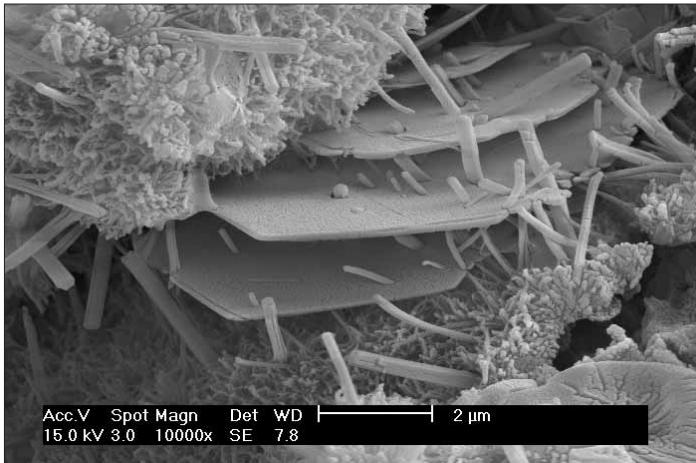
Cleaning the joints with Scotch-Brite® (when the product is partially set)



Cleaning and finishing the tile joints with a sponge



Wall covering in porcelain tiles grouted with **Ultracolor Plus**

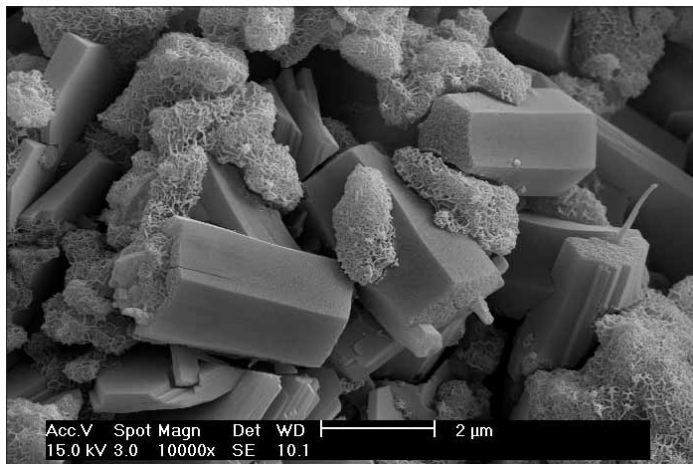


Hydration of a Portland cement-based binder in a traditional grouting mortar



Spreading Ultracolor Plus on a floor with a rubber float

Hydration of Ultracolor Plus special cement-based binder. Note the absence of lamellar crystals of Portlandite (calcium hydroxide), which is the cause of whitish efflorescence



Cleaning and finishing the tile joints with a sponge

clean, rust-free container containing 21-23% by weight of clean water. Mix the grout with a low-speed mixer to avoid air entrainment, until a smooth paste is obtained. Let the mix stand for 2-3 minutes, and stir again briefly before use. Use the mix within 20-25 minutes of its preparation.

Applying the grout

Fill the joints with the **Ultracolor Plus** mix using a special MAPEI grout float or rubber squeegee, without leaving any gaps or steps. Remove any excess of **Ultracolor Plus** from the surface, by moving the float diagonally to the joints while the mix is still fresh.

Finishing

When the mix loses its plasticity and becomes opaque, which usually takes place after 15-30 minutes, clean off the excess **Ultracolor Plus** with a hard, damp sponge (e.g. a MAPEI sponge), working in a diagonal direction to the joints. Rinse the sponge frequently, using two different containers of water: one to remove the excess mix from the sponge, and the other, containing clean water, to rinse the sponge. This operation may also be

carried out with a machine with a sponge belt or rotating disc.

When the mix is partially set, after 50-60 minutes, a damp Scotch-Brite® sponge or an abrasive felt disc may be passed over the joints to even out the surface.

If the cleaning operation is carried out too soon (the mix is still too wet), some of the mix may be removed from the joints. If grouting is carried out in extremely hot, dry or windy weather, we recommend that dampen the joints filled with **Ultracolor Plus** are dampened after a few hours.

Damp curing of **Ultracolor Plus** improves its final characteristics in all cases.

Final cleaning of the powdery film of **Ultracolor Plus** from the surface may be carried out with a clean, dry cloth. After the final cleaning operation, if the surface still has traces of **Ultracolor Plus** due to incorrect application, it may be cleaned down with an acidic cleaner (e.g. **Keranet**), by following the relevant instructions, at least 24 hours after grouting the joints. Only use **Keranet** on surfaces which are resistant to acid, and never use it on marble or limestone material.



Example of porcelain tiles on the walls and floor of a bathroom, grouted with Ultracolor Plus

CONSUMPTION TABLE ACCORDING TO THE SIZE OF THE TILES AND WIDTH OF THE JOINTS (kg/m²)

Size of the tile (mm)	Width of the joint (mm)						
	2	3	5	8	10	15	20
20 X 20 X 4	1.3						
50 X 50 X 4	0.5						
75 X 150 X 6		0.6	1.0				
100 X 100 X 6		0.6	1.0				
100 X 100 X 10		1.0	1.6				
100 X 200 X 6		0.4	0.7				
100 X 200 X 10			1.2	1.9	2.4		
150 X 150 X 6		0.4	0.6				
200 X 200 X 8		0.4	0.6				
120 X 240 X 12			1.2	1.9	2.4		
250 X 250 X 12			0.8	1.2	1.5		
250 X 250 X 20			1.3	2.0	2.6	3.8	5.1
250 X 330 X 8		0.3	0.4	0.7	0.9		
300 X 300 X 8		0.3	0.4	0.7	0.9		
300 X 300 X 10		0.3	0.5	0.9	1.1		
300 X 300 X 20			1.1	1.7	2.1	3.2	4.3
300 X 600 X 10		0.2	0.4	0.6	0.8		
330 X 330 X 10		0.3	0.5	0.8	1.0		
400 X 400 X 10		0.2	0.4	0.6	0.8		
450 X 450 X 12			0.4	0.7	0.9		
500 X 500 X 12			0.4	0.6	0.8		
600 X 600 X 12			0.3	0.5	0.6		

FORMULA TO CALCULATE THE CONSUMPTION:

$$\frac{(A + B)}{(A \times B)} \times C \times D \times 1.6 = \frac{\text{kg}}{\text{m}^2}$$

- A = length of tile (in mm)
- B = width of tile (in mm)
- C = thickness of tile (in mm)
- D = width of joint (in mm)

SET TO LIGHT FOOT TRAFFIC

Floors are ready for light foot traffic after approx. 3 hours.

READY FOR USE

Surfaces grouted with **Ultracolor Plus** may be put into service after 24 hours. Basins and swimming pools may be filled up 48 hours after grouting.

Cleaning

Tools and containers may be cleaned using plenty of water whilst **Ultracolor Plus** is still fresh.

CONSUMPTION

The consumption of **Ultracolor Plus** varies according to the size of the joints and the size and thickness of the tiles.

The table illustrates a number of examples of the consumption in kg/m².

PACKAGING

23 kg bags, and 4x5 kg or 9x1 kg boxes dependent on the colour.

COLOURS AVAILABLE

Ultracolor Plus is available in 26 colours of the MAPEI range (please refer to the colour samples).

STORAGE

The shelf life of **Ultracolor Plus** is 12 months if stored in a dry place in its original packaging. However, after a certain amount of time, the setting time may extend but without modifying the final characteristics of the product.

Ultracolor Plus

SAFETY INSTRUCTIONS FOR PREPARATION AND APPLICATION

The product contains special hydraulic binders that, when in contact with sweat or other bodily fluids, may cause a slightly irritating alkaline reaction.

Wear protective gloves and goggles. For further information, please refer to the Safety Data Sheet.

FOR PROFESSIONALS.

WARNING

While the indications and guidelines contained in this data sheet correspond to the company's knowledge and wide

experience, they must be considered, under all circumstances, merely as an indication and subject to confirmation only after long-term, practical applications. Therefore, anybody who undertakes to use this product, must ensure beforehand that it is suitable for the intended application and, in all cases, the user is to be held responsible for any consequences deriving from its use.

All relevant references for the product are available upon request and from www.mapei.com



Example of a glass mosaic- chip dressing grouted with Ultracolor Plus in a shower cubicle



Example of annealed tiles laid in a kitchen and grouted with Ultracolor Plus

 **MAPEI**[®]
BUILDING THE FUTURE