

Schlüter®-KERDI-DRAIN

Drainage

Floor drains for bonded waterproofing assemblies

8.2

Product data sheet

Application and function

Schlüter®-KERDI-DRAIN is a floor drain system for the simple and secure connection of bonded waterproofing membranes to the drainage system of buildings. Bonded waterproof layers, which are recognised by the ZDB (German Contractors Association) notification as current state of technology.

The Schlüter®-KERDI Collar is attached to the large, trapezoid-perforated, and fleece-coated adhesive flange of the thin-set insert as a sealing connection to the bonded waterproofing assembly.

Schlüter®-KERDI-DRAIN products have a modular structure and can be individually assembled to match every requirement. A variety of grate designs can be combined with different vertical or horizontal drain casings with or without odour traps.

Schlüter®-KERDI-DRAIN-BASE is an especially low floor drain that is suitable for installation in barrier-free shower designs created with conventional method or with Schlüter®-KERDI-SHOWER floor components.

Complete sets of Schlüter®-KERDI-DRAIN are available in 3 variations for the installation of floor drain systems.

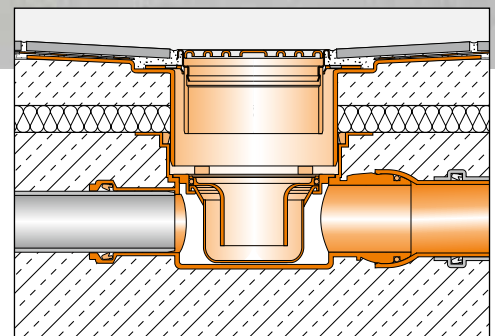
Material

Depending on the type, drain casings are made of high-impact polypropylene (PP) or acrylonitrile butadiene styrene (ABS). The thin-set insert consists of acrylonitrile butadiene styrene (ABS) with a bonding flange that features a fleece-covered surface.



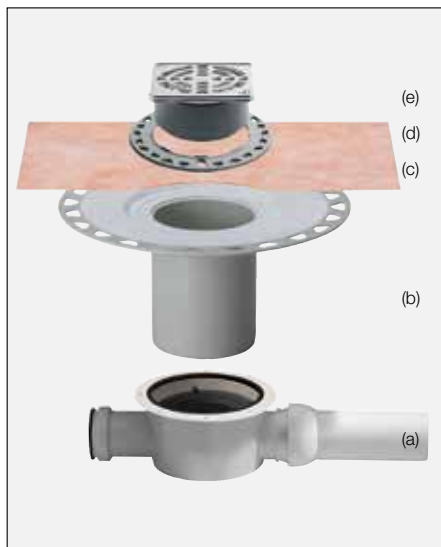
Schlüter®-KERDI Collar is a crack-bridging waterproofing membrane made of soft polyethylene (PE) and covered on both sides with a special fleece webbing to provide a solid bond to the tile adhesive.

The stainless steel grate is made of V2A (material no. 1.4301 = AISI 304), but can also be supplied in stainless steel V4A (material no. 1.4404 = AISI 316L).



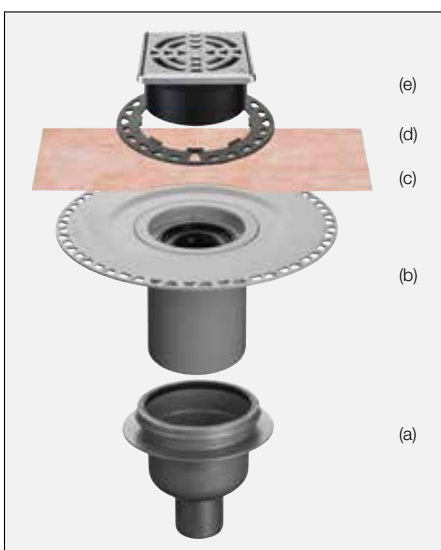


Schlüter®-KERDI-DRAIN interior - horizontal drain



a	Drain casing in raw concrete
b	Thin-set insert
c	Schlüter®-KERDI Collar
d	Height adjustment collar
e	Stainless steel grate with substructure

Schlüter®-KERDI-DRAIN interior - vertical drainage



a	Drain casing in raw concrete
b	Thin-set insert
c	Schlüter®-KERDI Collar
d	Height adjustment collar
e	Stainless steel grate with substructure

Material properties and areas of application:

The drain casings, thin-set inserts, and covers are classified as K3 pursuant to DIN EN 1253, "Drains for buildings."

This classification refers to surfaces without vehicular traffic, such as wet areas in apartments, senior residences, hotels, schools, washing and shower installations, as well as terraces, patios, and balconies.

Drains installed in areas that may be exposed to freezing temperatures must not have an odour trap. If an odour trap is required, it must be installed at a different location where it is protected from freezing, for example within a building.

The horizontal drain casing of the floor drain set KD BH 50 GV has an inlet and an outlet. The inlet is covered with a factory-installed cap, which can be removed and connected, e.g. to a sink, in order to ensure regular refilling of the odour trap.

Grates made of stainless steel 1.4301 (V2A) or 1.4404 (V4A) are particularly well suited for applications that, in addition to high mechanical stresses, require resistance to chemicals such as acidic or alkaline media, cleaning agents, or de-icing salts. Depending on the anticipated stresses, customers can choose between the alloy materials 1.4301 or 1.4404. The use of 1.4404 is recommended if consistent chemical exposure is expected, for example in the case of swimming pools (fresh water). Even stainless steel is not resistant to all chemical stresses, and may be affected by, e.g., hydrochloric and hydrofluoric acid or certain chloride and brine concentrations. In certain cases, this also applies to seawater pools. Special anticipated stresses should therefore be verified in advance.

Installation of Schlüter®-KERDI-DRAIN with drain casing

1. The Schlüter®-KERDI-DRAIN drain casing (a) is integrated into the floor assembly and connected to the drainage system (Fig. 1).
2. If required, sound or heat insulation may be installed (Fig. 2).
3. The construction cover of the drain housing (Fig. 3) is removed and the thin-set insert Schlüter®-KERDI-DRAIN (b) is cut to the height of the floor assembly (Fig. 4). The unit is set on top of the floor drain (Fig. 6) and pushed into place (using a lubricant if required). Note on Fig.6: To allow for sufficient height movement of coverings with insulation, cut the neck to such a length that it does not sit on the bottom of the drain housing.
4. The screed is then placed and aligned flush with the trapezoid-perforated bonding flange of the Schlüter®-KERDI-DRAIN thin-set insert (b).
5. By adhering the Schlüter®-KERDI Collar (c), a waterproof connection to the screed surface is achieved (Fig. 7). The connecting waterproof layer, consisting of Schlüter®-KERDI or a trowel-applied system, is connected to the collar with a sufficient overlap. If Schlüter®-DITRA 25 is used as the waterproof layer, it is carried to the edge of the perforated bonding flange. Then, ensuring solid coverage, Schlüter®-KERDI Collar is set, overlapping the DITRA 25 membrane. Schlüter®-KERDI Collar is best adhered with the sealing adhesive Schlüter®-KERDI-COLL-L.
6. Coatings or tiles can be applied as surface coverings. The height of the grate (e) is adjusted via the adjustment collar (d). The grate is set with adhesive and aligned flush with the covering (Fig. 8). Since the neck of the grate (e) has a smaller diameter than the thin-set insert (b), the grate can be positioned to match the joint pattern of the tile covering.

Note:

Schlüter®-KERDI-DRAIN can also be installed in wood constructions. Further details are available upon request.

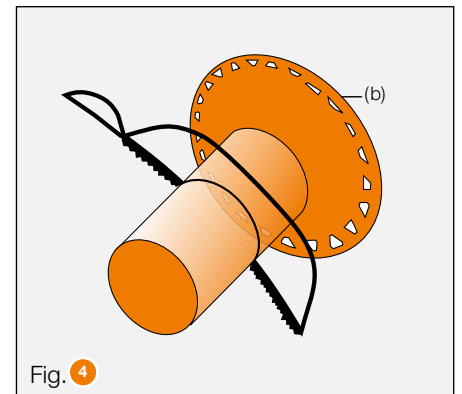
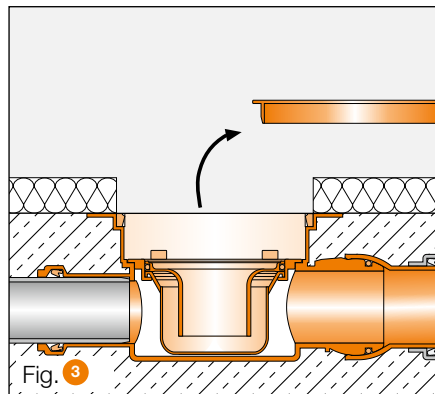
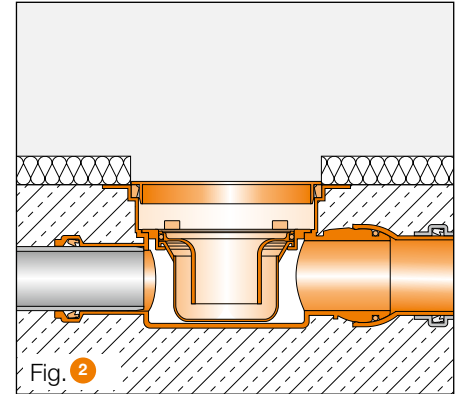
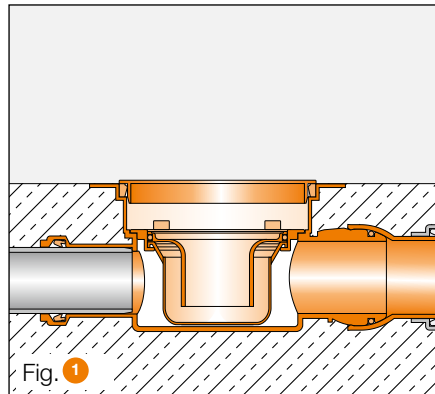


Notes

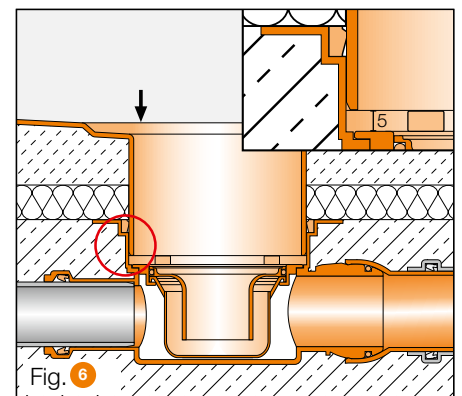
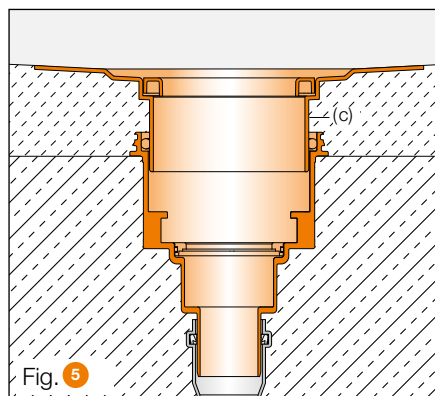
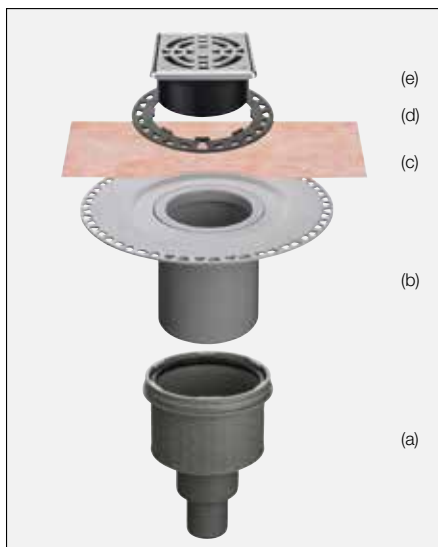
Schlüter®-KERDI-DRAIN requires no special maintenance or care. Stainless steel surfaces exposed to the environment or aggressive substances should be cleaned periodically using a mild household cleaner.

Regular cleaning maintains the neat appearance of stainless steel and reduces the risk of corrosion. All cleaning agents must be free of hydrochloric and hydrofluoric acid.

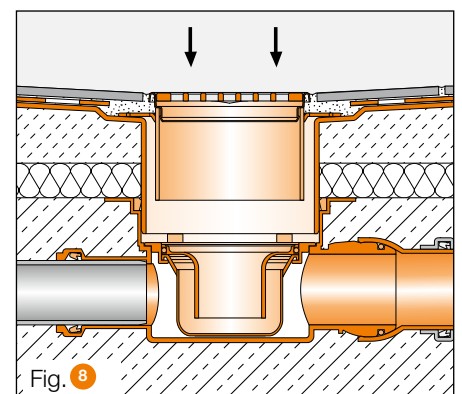
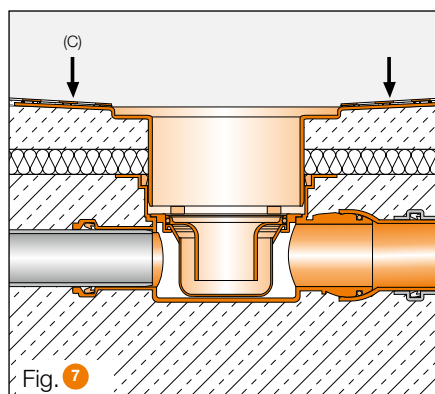
The stainless steel grate and the odour trap may be removed to clean the drain casing and the drain pipes.



Schlüter®-KERDI-DRAIN exterior - vertical drain



Example assembly - vertical drain



a Drain casing – without odour trap

b Thin-set insert

c Schlüter®-KERDI Collar

d Height adjustment collar

e Stainless steel grate with substructure



Installation Schlüter®-KERDI-DRAIN-BASE

1. The drain casing Schlüter®-KERDI-DRAIN-BASE (a) is placed on the support structure (using suitable impact insulation if required) and connected to the drainage pipe. If necessary, the supplied adapter piece DN 40/50 (b) is used for this purpose.
2. The screed is installed in such a way that the trapezoid-perforated flange of the Schlüter®-KERDI-DRAIN thin-set insert (c) is flush with the upper edge of the screed (see Fig. 1).
3. Attaching Schlüter®-KERDI Collar (d) with the sealing adhesive Schlüter®-KERDI-COLL-L creates a waterproof transition to the screed area. The connecting waterproof layer, consisting of Schlüter®-KERDI or a trowel-applied system, is connected to the collar with a sufficient overlap. If Schlüter®-DITRA 25 is used as the waterproof layer, it is carried to the edge of the perforated bonding flange. The Schlüter®-KERDI Collar is now embedded with full overlap on the DITRA 25 mat. Schlüter®-KERDI Collar is best adhered with the sealing adhesive Schlüter®-KERDI-COLL-L. The corresponding installation instructions must be observed if Schlüter®-KERDI-DRAIN-BASE is installed together with Schlüter®-KERDI-SHOWER (Fig. 2).
4. Suitable covering materials include coatings or ceramic tiles (covering thicknesses 3-15 mm). Without using lubricants, the stainless steel grate (Fig. 3) is pushed in place. The grate is set with adhesive (Fig 4) and aligned flush with the covering.
5. Prior to using the drain, remove the stainless steel grate and push down on the odour trap to check its positioning (Fig. 5; if necessary, apply some lubricant to the O-ring).

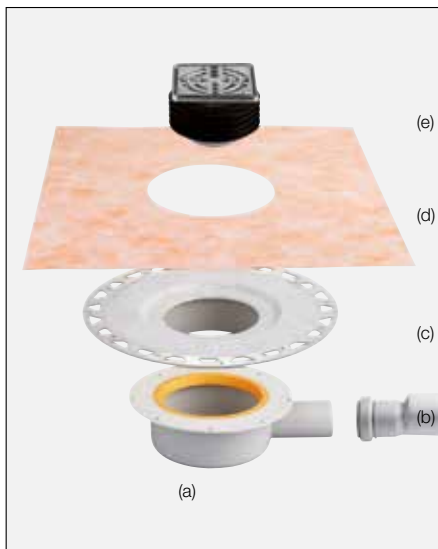
Notes

Schlüter®-KERDI-DRAIN-BASE requires no special maintenance or care. Stainless steel surfaces exposed to the environment or aggressive substances should be cleaned periodically using a mild household cleaner.

Regular cleaning maintains the neat appearance of stainless steel and reduces the risk of corrosion. All cleaning agents must be free of hydrochloric and hydrofluoric acid.

The stainless steel grate and the odour trap may be removed to clean the drain casing and the drain pipes.

Schlüter®-KERDI-DRAIN-BASE

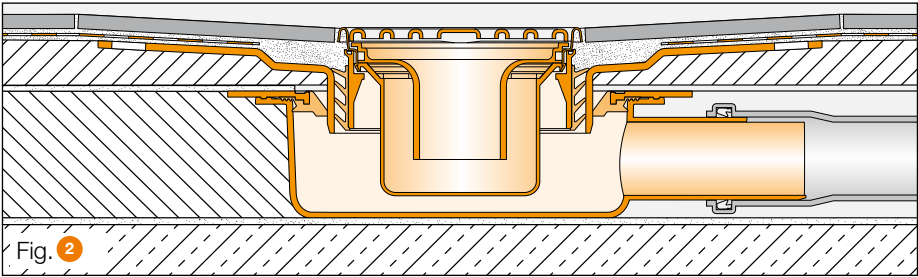
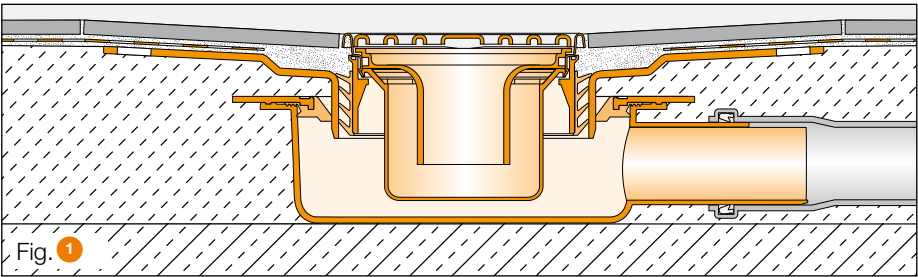


Sample assembly

a	Drain casing
b	Transition from DN 40 to DN 50
c	Thin-set insert
d	Schlüter®-KERDI Collar
e	Stainless steel grate with substructure and integrated odour trap

Note:

Schlüter®-KERDI-DRAIN can also be installed in wood constructions. Further details are available upon request.





Schlüter®-KERDI-DRAIN thin-set floor drain



Sample assembly

a	Thin-set floor drain
b	Schlüter®-KERDI Collar
c	Two-piece odour trap
d	Height adjustment collar
e	Stainless steel grate with substructure

Installation Schlüter®-KERDI-DRAIN thin-set floor drain

1. After the installation of impact or heat insulation, if applicable, the thin-set floor drain (a) is positioned in accordance with the height of the floor assembly and connected to the drainage system.
2. The screed is then installed in such a way that the trapezoid-perforated flange of the Schlüter®-KERDI-DRAIN insert (Fig. 1) is flush with the upper edge of the screed.
3. By adhering the Schlüter®-KERDI Collar (b) with the sealing adhesive Schlüter®-KERDI-COLL-L a waterproof connection to the screed surface is achieved (Fig. 2). The connecting waterproof layer, consisting of Schlüter®-KERDI or a trowel-applied system, is connected to the collar with a sufficient overlap. If Schlüter®-DITRA 25 is used as the waterproof layer, it is carried to the edge of the perforated bonding flange. The Schlüter®-KERDI Collar is now embedded with full overlap on the DITRA 25 mat. Schlüter®-KERDI Collar is best adhered with the sealing adhesive Schlüter®-KERDI-COLL-L.
4. Coatings or tiles (Fig 3) can be applied as surface coverings.

Note:

Schlüter®-KERDI-DRAIN can also be installed in wood constructions. Further details are available upon request.

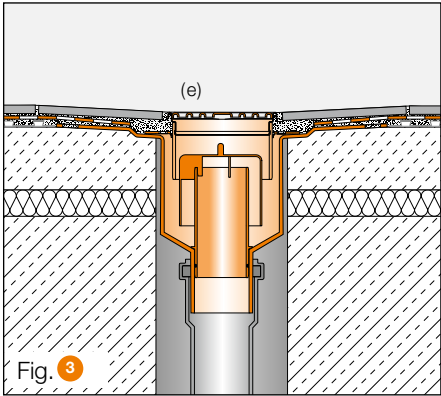
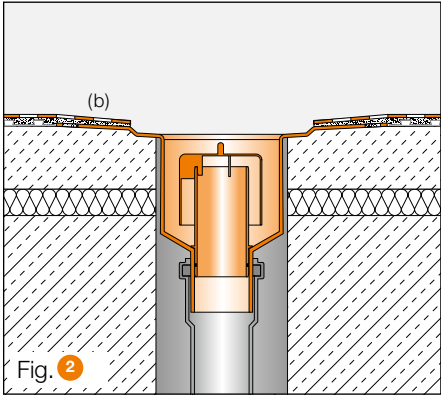
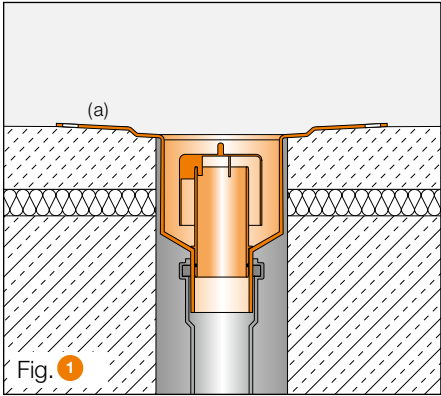
Notes

Schlüter®-KERDI-DRAIN requires no special maintenance or care. Stainless steel surfaces exposed to the environment or aggressive substances should be cleaned periodically using a mild household cleaner. Regular cleaning maintains the neat appearance of stainless steel and reduces the risk of corrosion.

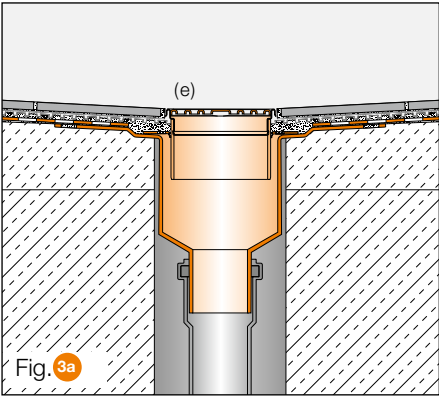
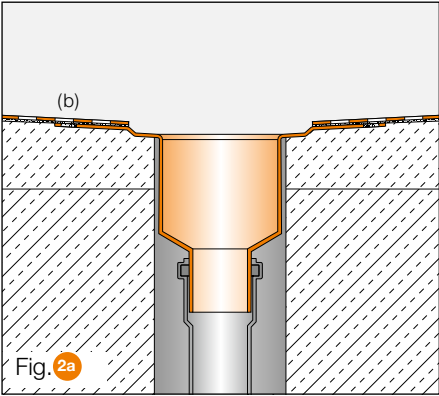
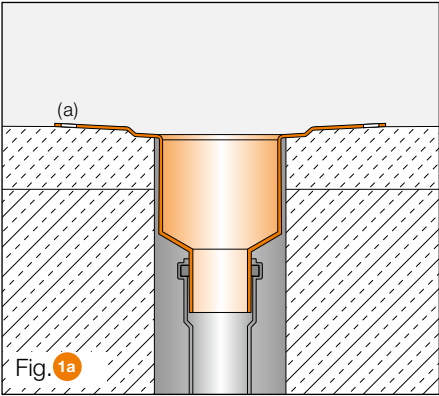
All cleaning agents must be free of hydrochloric and hydrofluoric acid. The stainless steel grate and the odour trap may be removed to clean the drain casing and the drain pipes.



Interior



Exterior





Installing the Schlüter®-KERDI-DRAIN covering support

1. The installation of the covering can begin as soon as Schlüter®-KERDI Collar has been adhered with the sealing adhesive Schlüter®-KERDI-COLL-L. Suitable covering materials include ceramic tiles or natural stone.

2. **Covering support with substructure and adjustment collar.** Thin-bed mortar is applied to the thin-set floor drain (Fig. 1a). The stainless steel frame with the perforated holes is placed into the recessed openings of the adjustment collar (Fig. 2a) and embedded it in the thin-bed mortar (Fig. 3a).

Covering support with substructure and integrated odour trap. The stainless steel grate with neck is placed into the thin-set insert (Fig. 1b), set in mortar (Fig. 2b), and then pushed in to the maximum depth (Fig. 3b).

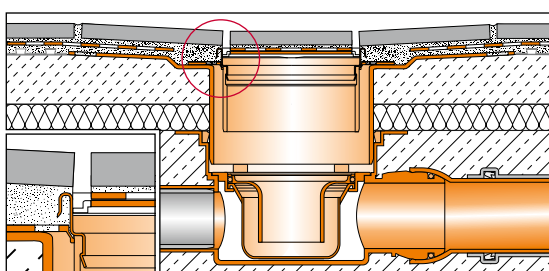
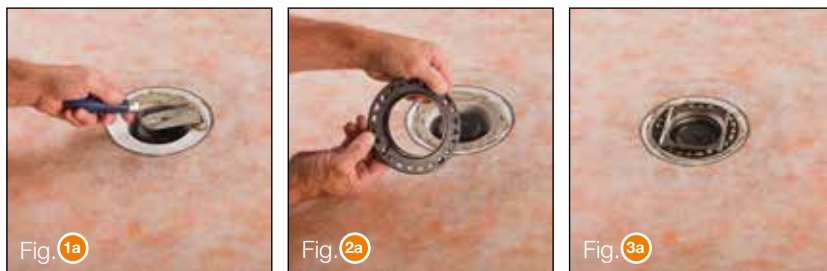
3. Once the spacer has been placed, the installation of the covering can begin. It is important to install the covering directly adjoining the spacer at the frame (Fig. 4). Any excess mortar must be wiped off after removing the spacer.

4. Place thin-bed adhesive on the covering support (Fig. 5) and adhere it to the matching covering cut-out of 8.2 x 8.2 cm (Fig. 6) to create a peripheral water drainage gap of at least 5 mm (Fig. 7).

Note:

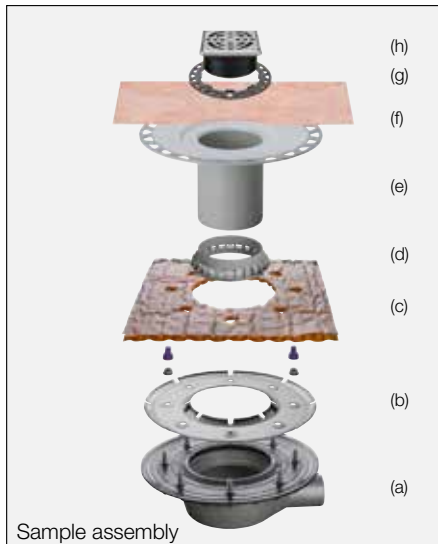
For neat appearance, it is recommended to use a wet cutting machine for custom cuts and to bevel the edges.

The installation instructions included with the drain casing also must be observed.





Schlüter®-KERDI-DRAIN KD BH 50 MSBB



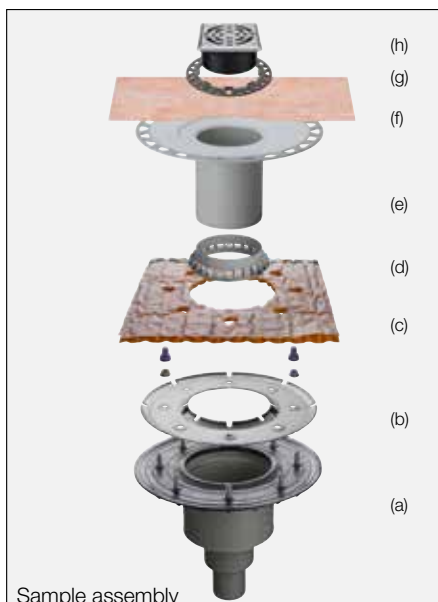
Floor drain set:

- a Drain casing with waterproofing connection
- b Stainless steel flange collar
- c Schlüter®-TROBA-PLUS 8 drainage collar
- d Inlet element
- e Thin-set insert
- f Schlüter®-KERDI Collar

Grate/frame set:

- g Adjustment collar
- h Stainless steel grate with substructure

Schlüter®-KERDI-DRAIN KD BV 50 MSBB

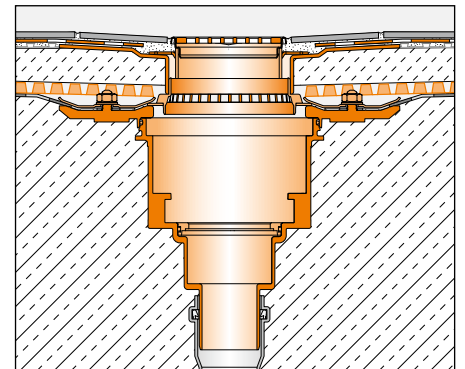


Drainage at two levels

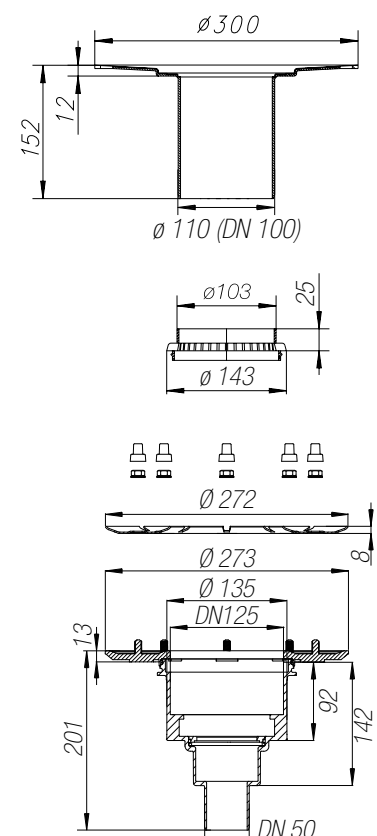
1. The drain system Schlüter®-KERDI-DRAIN (a) is installed in the support structure and connected to the drainage pipe.
2. Prior to installing the waterproofing membrane, the stainless steel flange ring (b) is removed. Then install the waterproofing membrane and cut out an opening in the size of the sealing flange. The enclosed Schlüter®-TROBA-PLUS drainage collar (c) can be used as a template for cutting. After inserting the waterproofing membrane, set the stainless steel flange ring in place and firmly tighten the screws.
3. Insert the perforated inlet element (d) into the sealing flange. The enclosed Schlüter®-TROBA-PLUS 8 drainage collar is placed on the sealing flange, matching the cut-outs. The Schlüter®-KERDI-DRAIN (e) thin-set insert is cut to size in accordance with the assembly height and placed over the perforated inlet element.
4. Now install the screed in such a way that the trapezoid perforated flange of the Schlüter®-KERDI-DRAIN thin set insert (e) is flush with the upper edge of the screed.
5. By adhering the Schlüter®-KERDI Collar (b) with the sealing adhesive Schlüter®-KERDI-COLL-L a waterproof connection to the screed surface is achieved. The connecting waterproof layer, consisting of Schlüter®-KERDI or a trowel-applied system, is connected to the collar with a sufficient overlap. If Schlüter®-DITRA 25 is used as the waterproof layer, it is carried to the edge of the perforated bonding flange. The Schlüter®-KERDI Collar is now embedded with full overlap on the DITRA 25 mat. Schlüter®-KERDI Collar is best adhered with the sealing adhesive Schlüter®-KERDI-COLL-L.
6. Coatings or tiles can be applied as surface coverings. The height of the grate (h) is adjusted via the adjustment collar (g). The grate is set with adhesive and aligned flush with the covering. Since the substructure of grate (h) has a smaller diameter than the thin set insert (e), the grate can be positioned to match the joint pattern of the tile covering.

Note:

The applicable construction guidelines for flat roofs with continuous peripheral parapets call for a safety overflow. Our stainless steel spout Schlüter®-KERDI-DRAIN-SP-E is particularly suited for this purpose.

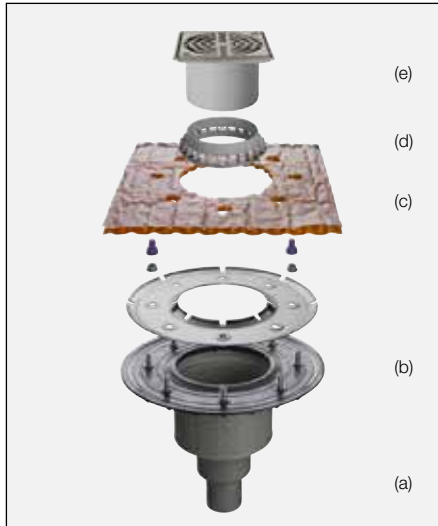


Sample installation, vertical

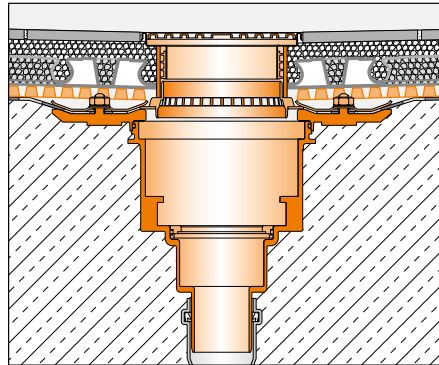




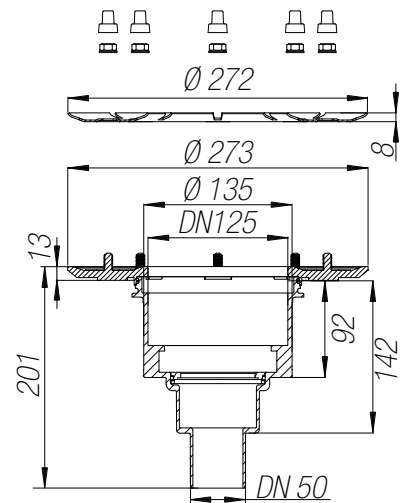
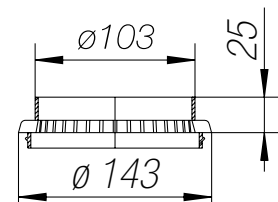
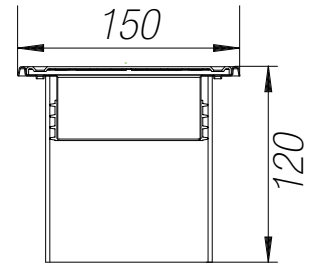
Schlüter®-KERDI-DRAIN KD BV 50 ASLVB



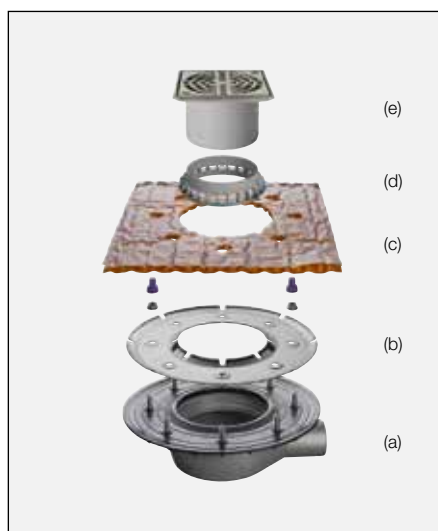
- a Drain casing with waterproofing connection
- b Stainless steel flange ring
- c Schlüter®-TROBA-PLUS 8 drainage collar
- d Inlet element
- e Insert for loose installation



Example installation, vertical



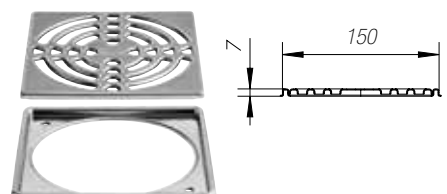
Schlüter®-KERDI-DRAIN KD BH 50 ASLVB



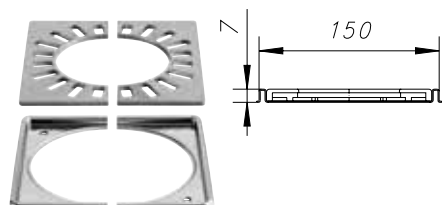
Renovation insert as an accessory

Renovation frame of stainless steel with 150 x 150 mm grate for subsequent installation.

Supplied unit: Frame with grate
Art. No.: KD 15 R



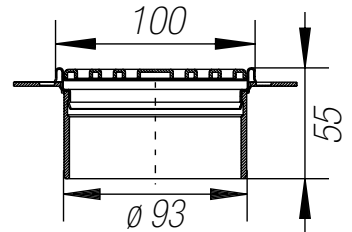
Two-piece renovation frame 150 x 150 mm and two-piece stainless steel grate for subsequent installation over an existing downspout with Ø 70 mm.
Supplied unit: Frame with grate
Art. No.: KD 15 RL



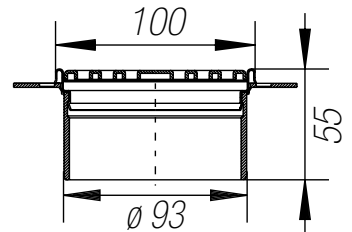


Grate/frame set with substructure and height adjustment ring

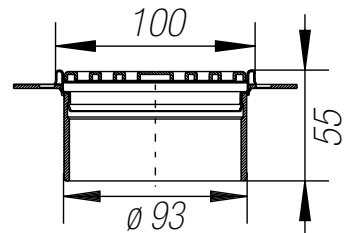
Stainless steel grate with substructure and adjustment collar
Screw-attached stainless steel grate
100 x 100 mm, Design 1,
laterally adjustable in all directions
For covering thicknesses from 3 to 30 mm
Art. No.: KD R10 ED1 S



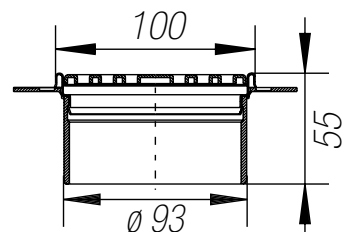
Stainless steel grate with substructure and adjustment collar
Screw-attached grate 100 x 100 mm, Design 1, V4A,
laterally adjustable in all directions
For covering thicknesses from 3 to 30 mm
Art. No.: KD R10 V4A D1 S



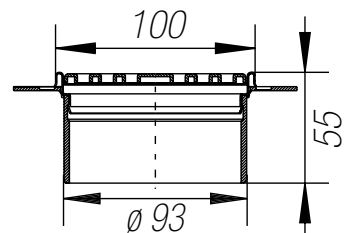
Stainless steel grate with substructure and adjustment collar
100 x 100 mm, Design 1
laterally adjustable in all directions
For covering thicknesses from 3 to 30 mm
Art. No.: KD R10 ED1



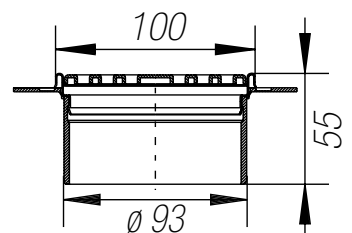
Stainless steel grate with substructure and adjustment collar
Screw-attached grate 100 x 100 mm, Design 1, stainless steel, oil-rubbed bronze,
laterally adjustable in all directions
For covering thicknesses from 3 to 30 mm
Art. No.: KD R10 EOB D1 S



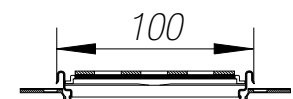
Stainless steel grate with substructure and adjustment collar
Grate 100 x 100 mm,
Design 2,
laterally adjustable in all directions
For covering thicknesses from 3 to 30 mm
Art. No.: KD R10 ED2



Stainless steel screen with substructure and adjustment collar
Grate 100 x 100 mm, Design 3,
laterally adjustable in all directions
For covering thicknesses from 3 to 30 mm
Art. No.: KD R10 ED3

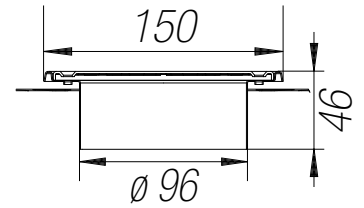


Covering support with adjustment collar
Covering support 100 x 100 mm, Design 4,
laterally adjustable in all directions,
No specific covering thickness required
Art. No.: KD R10 ED4

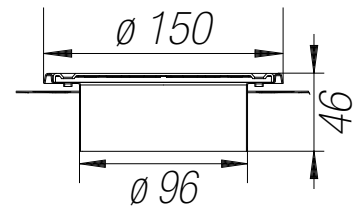




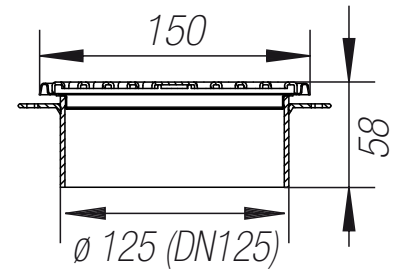
Stainless steel grate with substructure and adjustment collar
150 x 150 mm, Design 1,
laterally adjustable in all directions
For covering thicknesses from 3 to 20 mm
Art. No.: KD R15 ED1 S



Stainless steel screen with substructure and adjustment collar
Grate ø 150 mm,
Design 1,
laterally adjustable in all directions
For covering thicknesses from 3 to 20 mm
Art. No.: KD R15 ED1 SR



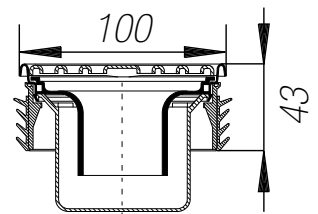
Stainless steel grate with substructure and adjustment collar
Grate 150 x 150 mm, Design 1,
laterally adjustable in all directions
For covering thicknesses from 3 to 30 mm
Art. No.: KD R15 ED1 SB



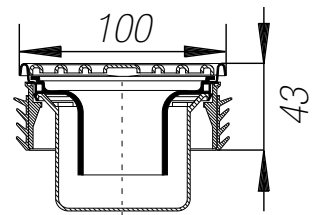


Grate/frame set with substructure and integrated odour trap

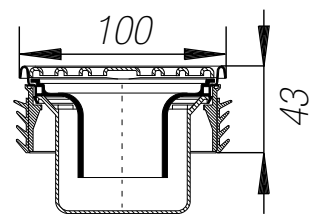
Stainless steel grate with substructure and integrated odour trap
Screw-attached grate 100 x 100 mm,
Design 1,
Water trap height: 3 cm
For covering thicknesses from 3 to 15 mm
Art. No.: KD R10 ED1 SGV



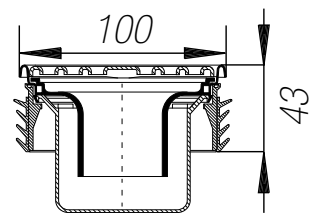
Stainless steel grate with substructure and integrated odour trap
Screw-attached grate 100 x 100 mm,
Design 1, V4A
Water trap height: 3 cm
For covering thicknesses from 3 to 15 mm
Art. No.: KD R10 V4A D1 SGV



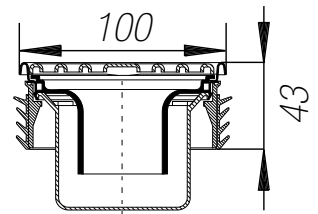
Stainless steel grate with substructure and integrated odour trap
Grate 100 x 100 mm,
Design 1
Water trap height: 3 cm
For covering thicknesses from 3 to 15 mm
Art. No.: KD R10 ED1 GV



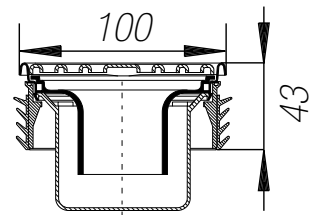
Stainless steel grate with substructure and integrated odour trap
Screw-attached grate 100 x 100 mm,
Design 1
Stainless steel oil-rubbed bronze,
water trap height: 3 cm
For covering thicknesses from 3 to 15 mm
Art. No.: KD R10 EOB D1 SGV



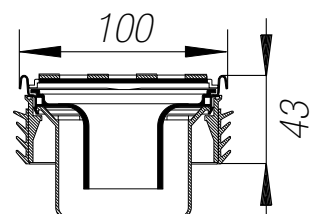
Stainless steel grate with substructure and integrated odour trap
Grate 100 x 100 mm,
Design 2
Water trap height: 3 cm
For covering thicknesses from 3 to 15 mm
Art. No.: KD R10 ED2 GV



Stainless steel grate with substructure and integrated odour trap
Grate 100 x 100 mm,
Design 3
Water trap height: 3 cm
For covering thicknesses from 3 to 15 mm
Art. No.: KD R10 ED3 GV



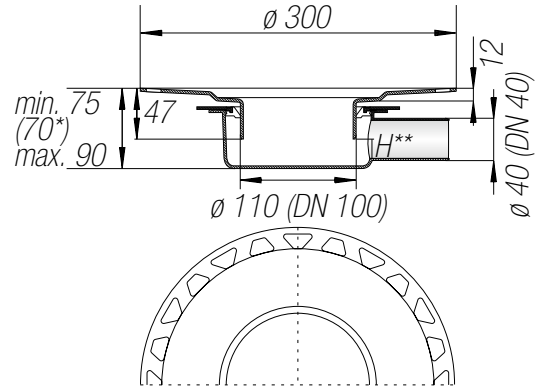
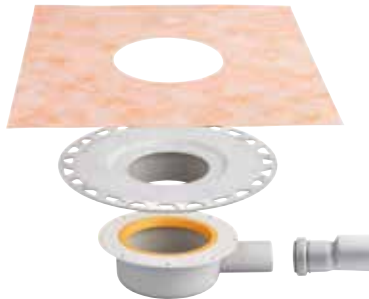
Covering support with substructure and integrated odour trap
Covering support 100 x 100 mm,
Design 4
Water trap height: 3 cm
No specific covering thickness required
Art. No.: KD R10 ED4 GV



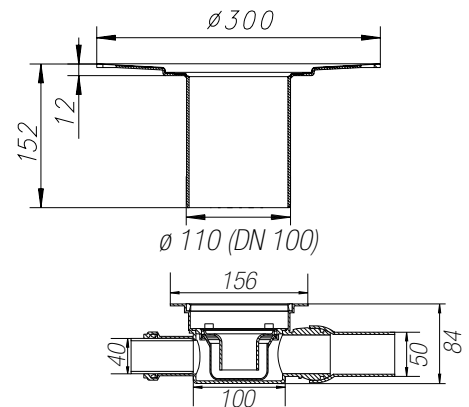
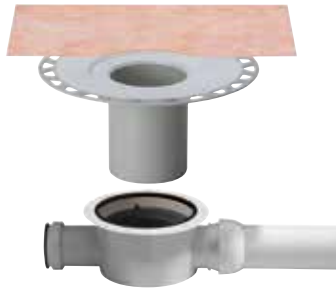


Schlüter®-KERDI-DRAIN - Interior Horizontal drain and odour trap

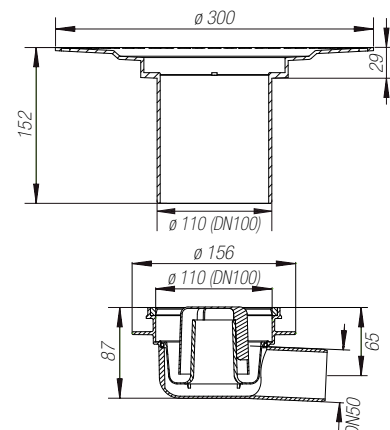
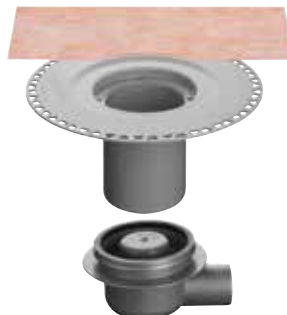
Floor drain set DN 40
without odour trap,
drain DN 40 (40 mm) with rigid connector,
Drain capacity: 0.4l/s (24 l/min)
Water trap height: 3 cm
Art. No. KD BH 40
Supplied unit:
- Drain casing
- Outlet connector DN 40/ DN 50
- Thin-set insert DN 100
- Schlüter®-KERDI Collar
See previous page for matching grates with
integrated odour trap

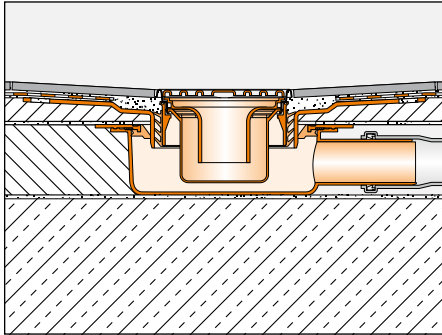


Floor drain set DN 50 with odour trap
Inlet DN 40 (40 mm), outlet DN 50 (50 mm)
with pivot connection
Drain capacity: 0.6l/s (36 l/min)
Water trap height: 3 cm
Art. No. KD BH 50GV
Supplied unit:
- Drain casing
- Thin-set insert DN 100
- Schlüter®-KERDI Collar



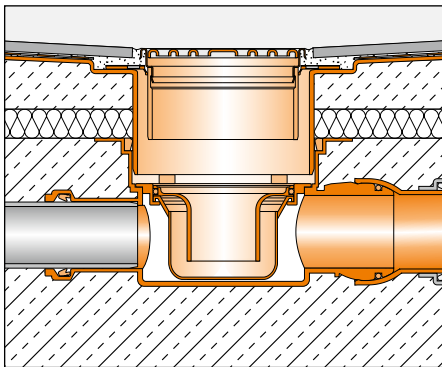
Floor drain set DN 50/70 with odour trap,
Drain DN 50 (50 mm) with rigid connector,
Drain capacity: 0.8l/s (48 l/min)
Water trap height: 5 cm
Art. No. KD BH 5070 GVB
Supplied unit:
- Drain casing
- Outlet connector DN 50/DN 70
- Thin-set insert DN 100
- Schlüter®-KERDI Collar



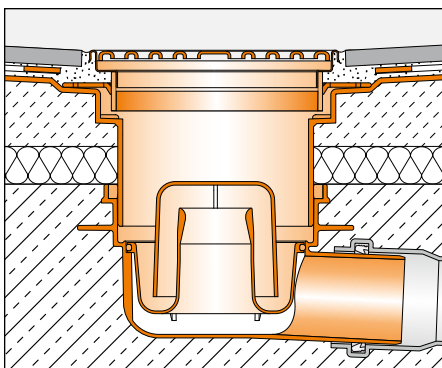


The installation height can be reduced by 5 mm to 70 mm by removing the rubber ring. To meet the requirements of DIN 1253 and to achieve a drain capacity of 0.4l/s, a free cross-section (H**) of 32 mm must be ensured. The thin-set insert and neck must be cut to size accordingly if a covering support is used.

Application: Interior
Min. assembly height: 75 (70) mm



Application: Interior
Min. assembly height: 97 mm



Application: Interior
Min. assembly height: 115 mm
Complies with DIN EN 1253



Schlüter®-KERDI-DRAIN - Interior Vertical drain and odour trap

Thin-set floor drain with odour trap

Drain DN 50 (50 mm),

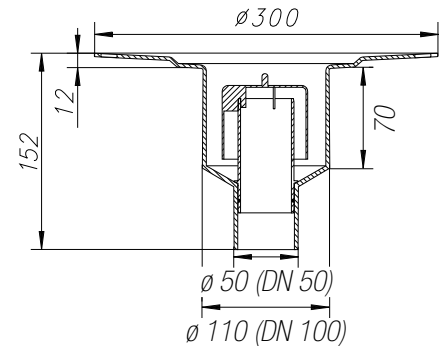
Drain capacity: 0.6l/s (36 l/min)

Water trap height: 4 cm

Art. No. KD BV 50 GV

Supplied unit:

- Thin-set floor drain DN 50
- Schlüter®-KERDI Collar
- Two-piece odour trap



Thin-set floor drain set DN 50

with odour trap

Drain DN 50 (50 mm),

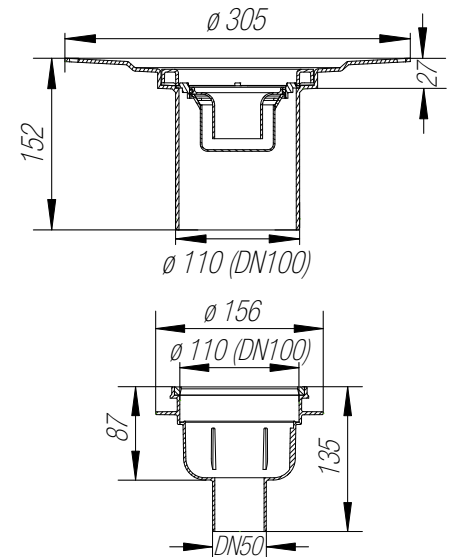
Drain capacity: 0.6l/s (36 l/min)

Water trap height: 3 cm

Art. No. KD BV 50 GVB

Supplied unit:

- Drain casing
- Thin-set insert DN 100
- Schlüter®-KERDI Collar



Thin-set floor drain set DN 50

with odour trap

Drain DN 50 (50 mm),

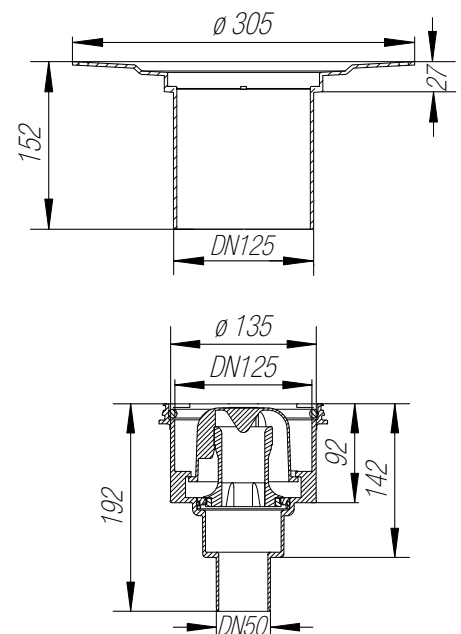
Drain capacity: 1.8l/s (108 l/min)

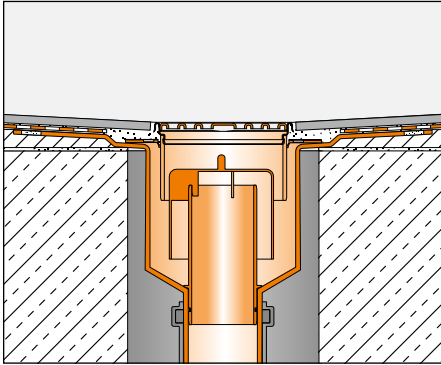
Water trap height: 5 cm

Art. No. KD BAV 50 GVB

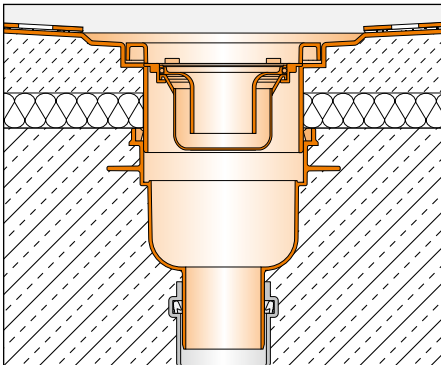
Supplied unit:

- Drain casing
- Thin-set insert DN 125
- Schlüter®-KERDI Collar

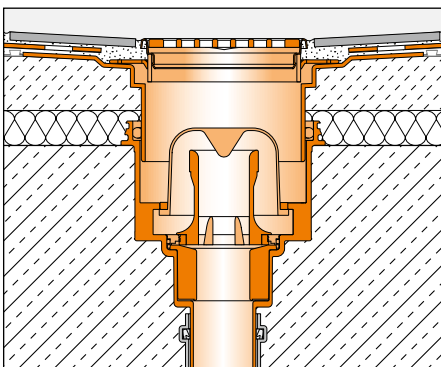




Application: Interior



Application: Interior



Application: Interior

Complies with DIN EN 1253



Schlüter®-KERDI-DRAIN - Interior Vertical drain and odour trap

Alternative:

Stainless steel grate with substructure

and integrated odour trap

Drain capacity: 0.6l/s (36 l/min)

Water trap height: 3 cm

Art. No. KD R10 ED1 SGV

plus

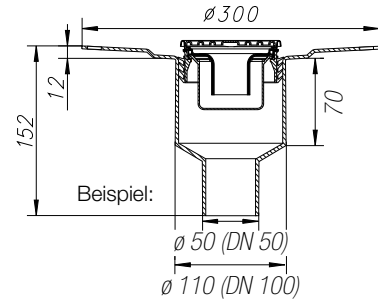
Thin-set floor drain

without odour trap

Drain DN 50 (50 mm), DN 70 (75 mm),

DN 100 (110 mm)

Art. no.: KD BV 50 or ... 70 or 100



Complete sets of Schlüter®-KERDI-DRAIN – interior areas Horizontal or vertical drain and odour trap

Art. No.: KD 10 H40 GV ED1 S

- horizontal thin-set floor drain
Schlüter®-KERDI-DRAIN-BASE DN 40/50
(drainage capacity 0.4 l/s),
min. assembly height 75 (70) mm
- Grate/frame combination with design
grate 1 of stainless steel with screws,
size 10 x 10 cm
- Grate with odour trap and lip seal

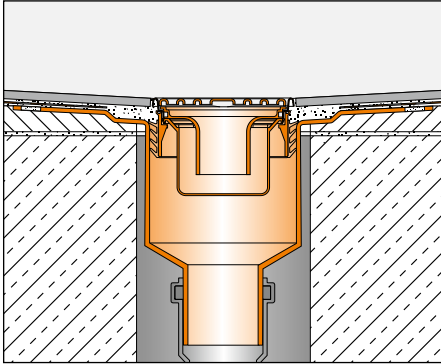
Art. No.: KD 10 V50 GV ED1 S

- Vertical thin-set floor drain
Schlüter®-KERDI-DRAIN DN 50
(drain capacity 0.6 l/s)
- Integrated odour trap
- Grate/frame combination with design
grate 1 of stainless steel with screws,
size 10 x 10 cm
- incl. frame extension, height adjustment
and dirt trap



Art. No.: KD 10 V50 GV ED3

- Vertical thin-set floor drain
Schlüter®-KERDI-DRAIN DN 50
(drain capacity 0.6 l/s)
- Integrated odour trap
- Grate/frame combination with
design grate 3
- made of brushed stainless steel,
size 10 x 10 cm
- incl. frame extension, height adjustment
and dirt trap



Application: Interior



Schlüter®-KERDI-DRAIN - Exterior Horizontal drain without odour trap

Floor drain set DN 50

Without odour trap

Drain DN 50 (50 mm) with rigid connector

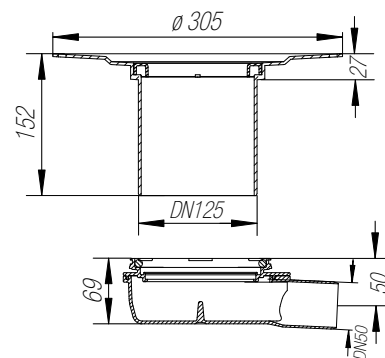
Drain capacity:

With frame/grate 1.4l/s (84 l/min)

Art. No. KD BH 50 B

Supplied unit:

- Drain casing
- Thin-set insert DN 125
- Schlüter®-KERDI Collar



Floor drain set DN 50 without odour trap with sealing flange to create 2-level drainage of surface water and seepage in conjunction with drain casings.

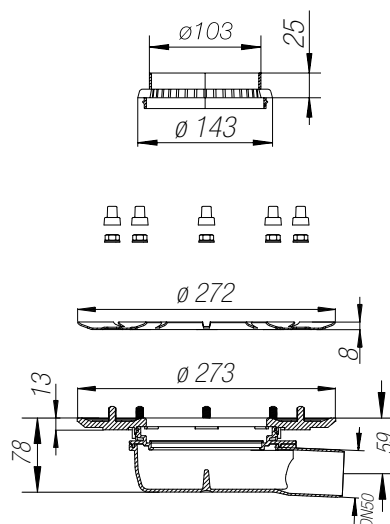
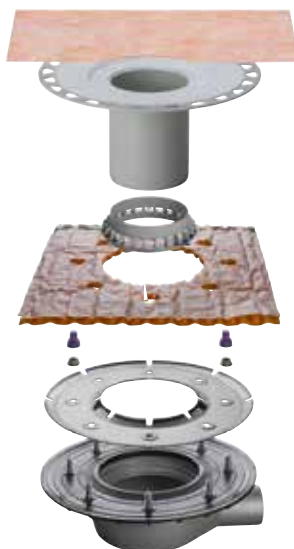
Drain capacity:

with frame/grate 1.4l/s (84 l/min)

Art. No. KD BH 50 MSBB

Supplied unit:

- Drain casing incl. sealing flange
- Stainless steel clamping ring
- Schlüter®-TROBA-PLUS drainage collar 30 x 30 cm
- Perforated inlet element
- Thin-set insert DN 100
- Schlüter®-KERDI Collar



Floor drain set DN 50 without odour trap with sealing flange to create 2-level drainage of surface water and seepage

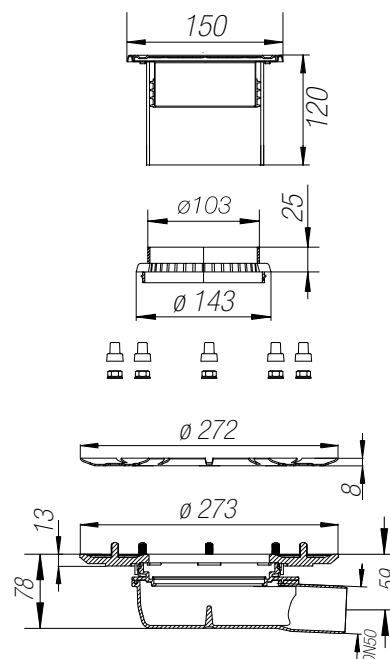
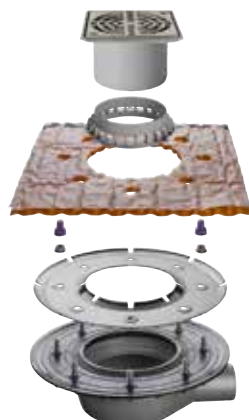
Drain capacity:

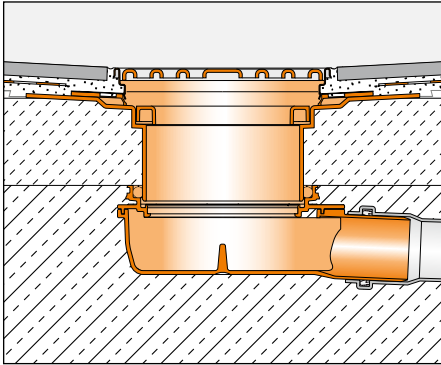
With frame/grate 1.4l/s (84 l/min)

Art. No. KD BH 50 ASLVB

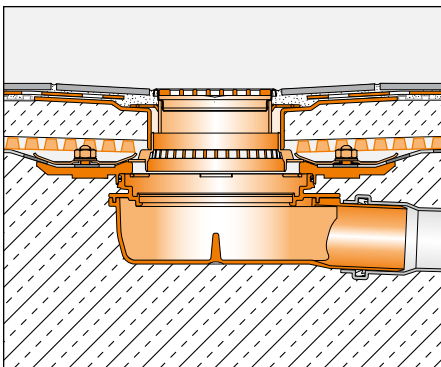
Supplied unit:

- Drain casing
- Stainless steel clamping ring
- Schlüter®-TROBA-PLUS drainage collar 30 x 30 cm
- Perforated inlet element
- Insert for loose installation including design grate R15 ED1 S

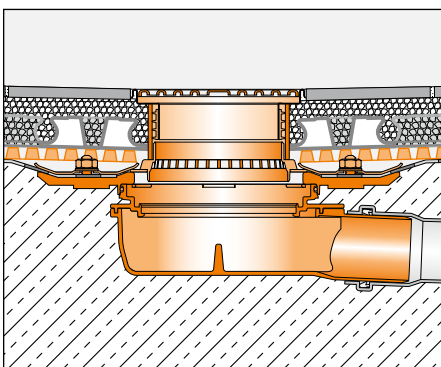




Application: Exterior
Min. assembly height: 98 mm



Application: Exterior
(2-level drainage)

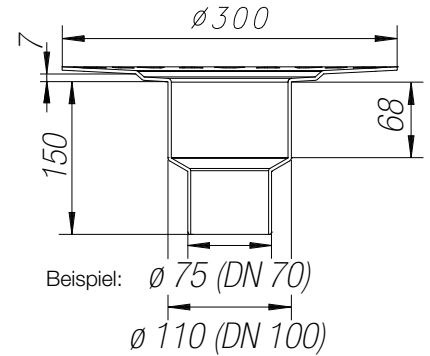


Application: Exterior
(2-level drainage, loose installation)

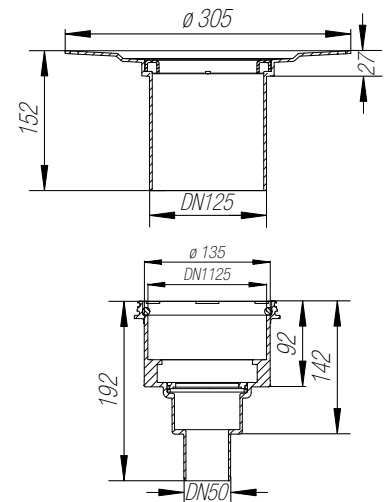


Schlüter®-KERDI-DRAIN - Exterior Vertical drain without odour trap

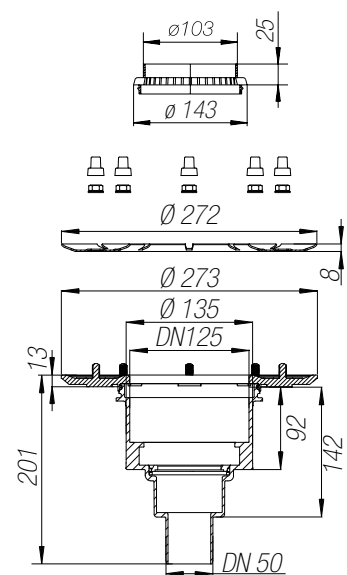
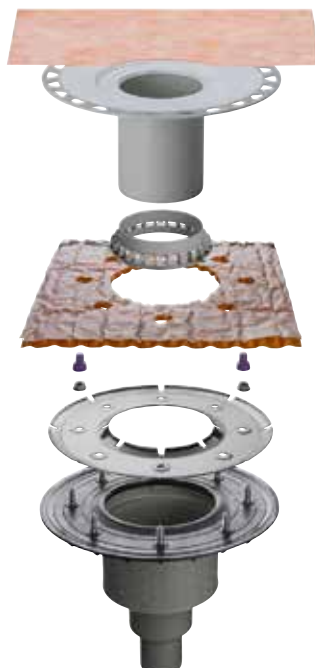
Thin-set floor drain
Without odour trap
Drain capacity: with frame/grate 1.4l/s (84 l/min)
Drain DN 50 (50 mm)
Art. No.: KD BV 50
Drain DN 70 (75 mm)
Art. No.: KD BV 70
Drain DN 100 (110 mm)
Art. No.: KD BV 100
Supplied unit:
- Thin-set floor drain
- Schlüter®-KERDI Collar

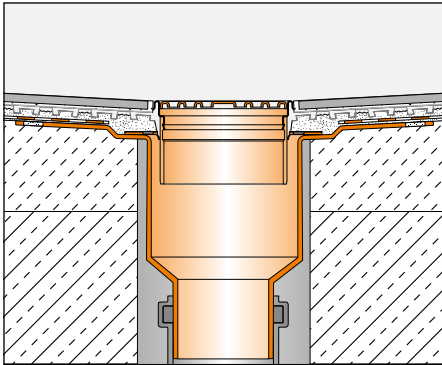


Floor drain set without odour trap
Drain DN 50 (50 mm),
Drain capacity:
With frame/grate 1.4l/s (84 l/min)
Art. No. KD BV 50 B
Supplied unit:
- Drain casing
- Thin-set insert DN 125
- Schlüter®-KERDI Collar

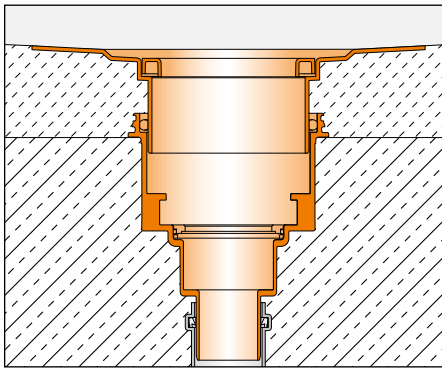


Floor drain set DN 50 without odour trap
with sealing flange
to create 2-level drainage of surface water
and seepage
Drain capacity:
With frame/grate 1.4l/s (84 l/min)
Art. No. KD BV 50 MSBB
Supplied unit:
- Drain casing incl. sealing flange
- Stainless steel clamping ring
- Schlüter®-TROBA-PLUS drainage collar
30 x 30 cm
- Perforated inlet element
- Thin-set insert DN 100
- Schlüter®-KERDI Collar

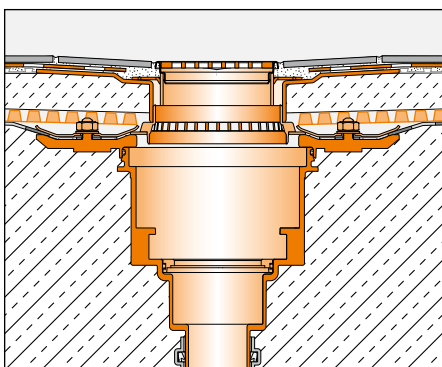




Application: Exterior



Application: Exterior



Application: Exterior
(2-level drainage)



Floor drain set DN 50

without odour trap with sealing flange to create 2-level drainage of surface water and seepage

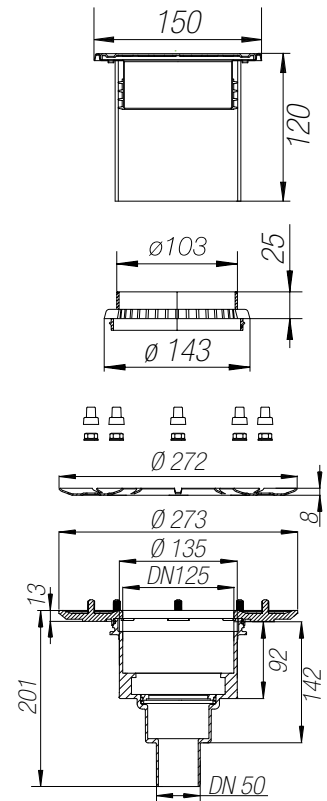
Drain capacity:

With frame/grate 1.4l/s (84 l/min)

Art. No. KDBV50ASLVB

Supplied unit:

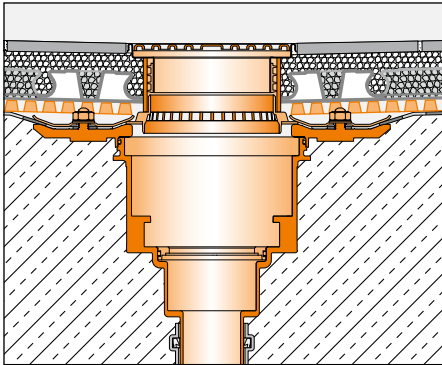
- Drain casing
- Stainless steel clamping ring
- Schlüter®-TROBA-PLUS drainage collar 30 x 30 cm
- Perforated inlet element
- Insert for loose installation including design grate R15 ED1 S



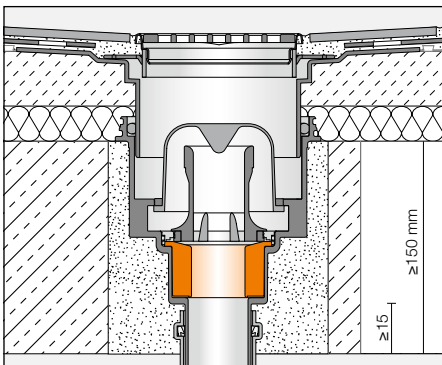
Fire protection solution with Schlüter®-KERDI-DRAIN-BS /-ZBS

The system components prevent the spread of fire to other floor levels according to approval number Z-19.17-1719. The fire protection insert (Art. No. KD BS) is positioned in the drain casing of the floor drain set Schlüter®-KERDI-DRAIN KD BA V50 GVB. In conjunction with the optional conduit gasket (Art. no. KD ZBS) inserted into the core hole (diameter 160 mm), the source material contained in the fire protection insert expands when a temperature of approx. 150 °C is exceeded to safely block the penetration of heat, fire and smoke for a fire resistance period of R120, R90, R60, R30 (depending on the ceiling). Alternatively, the drain casing can be embedded in concrete or subsequently covered with a Class MG III cement mortar in the floor slab.

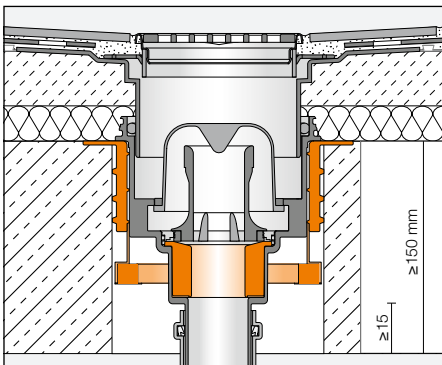




Application: Exterior
(2-level drainage, loose installation)



Fire protection insert



Conduit gasket
with fire protection function

**Text templates for tenders
Schlüter®-KERDI-DRAIN**

_____units Schlüter®-KERDI-DRAIN grate/
frame sets as a stainless steel grate with sub-
structure and adjustment collar, to be installed
as part of the surface covering to the height of
the floor construction

- Screw-attached stainless steel grate
10 x 10 cm, Design 1,
- Screw-attached stainless steel grate V4A
10 x 10 cm, Design 1,
- Stainless steel grate 10 x 10 cm, Design 1,
- Screw-attached stainless steel grate, oil-
rubbed bronze 10 x 10 cm, Design 1,
- Stainless steel grate 10 x 10 cm, Design 2,
- Stainless steel grate 10 x 10 cm, Design 3,
- Covering support 10 x 10 cm, Design 4,
- Screw-attached stainless steel grate
15 x 15 cm, Design 1,
- Screw-attached stainless steel grate
Ø 15 cm, Design 1,

... to be supplied and professionally installed
while observing the manufacturer's instructions.

Art. No.: _____
Material: _____ .../unit
Labour: _____ .../unit
Total price: _____ .../unit

_____units Schlüter®-KERDI-DRAIN grate/
frame sets as a stainless steel grate with
substructure and integrated odour trap, to be
installed as part of the surface covering to the
height of the floor construction.

- Screw-attached stainless steel grate
10 x 10 cm, Design 1,
- Screw-attached stainless steel grate V4A
10 x 10 cm, Design 1,
- Stainless steel grate 10 x 10 cm, Design 1,
- Screw-attached stainless steel grate,
oil-rubbed bronze 10 x 10 cm, Design 1,
- Stainless steel grate 10 x 10 cm, Design 2,
- Stainless steel grate 10 x 10 cm, Design 3,
- Covering support 10 x 10 cm, Design 4,

... to be supplied and professionally installed
while observing the manufacturer's instructions.

Art. No.: _____
Material: _____ .../unit
Labour: _____ .../unit
Total price: _____ .../unit

_____units Schlüter®-KERDI-DRAIN KD BH
40 as a horizontal floor drain set without odour
trap, drain DN 40 (40 mm) with rigid connector,
application area: Interior

... to be supplied and professionally installed
while observing the manufacturer's instructions.

Art. No.: _____
Material: _____ .../unit
Labour: _____ .../unit
Total price: _____ .../unit

_____units Schlüter®-KERDI-DRAIN KD BH
50 GV as a horizontal floor drain set with odour
trap, inlet DN 40 (40 mm), drain DN 50 (50 mm)
with jointed connector

... to be supplied and professionally installed
while observing the manufacturer's instructions.

Art. No.: _____
Material: _____ .../unit
Labour: _____ .../unit
Total price: _____ .../unit

_____units Schlüter®-KERDI-DRAIN KD BH
5070 GVB as a horizontal floor drain set with
odour trap, drain DN 50 with rigid connector,

- application area: Interior

... to be supplied and professionally installed
while observing the manufacturer's instructions.

Art. No.: _____
Material: _____ .../unit
Labour: _____ .../unit
Total price: _____ .../unit

_____units Schlüter®-KERDI-DRAIN as a
horizontal complete set, consisting of:

- Thin-set floor drain Schlüter®-KERDI-
DRAIN-BASE DN 40/50
- Grate/frame combination with design grate 1
of stainless steel. 10 x 10 cm with screws,
incl. odour trap and lip seal, for use in:
Interior areas

... to be supplied and professionally installed
while observing the manufacturer's instructions.

Art. No.: _____
Material: _____ .../unit
Labour: _____ .../unit
Total price: _____ .../unit

_____units Schlüter®-KERDI-DRAIN as a
vertical complete set, consisting of:

- Thin-set floor drain Schlüter®-KERDI-DRAIN
DN 50 with integrated odour trap
- Grate/frame combination with design grate 1
of stainless steel. 10 x 10 cm with screws, for
use in: Interior areas

... to be supplied and professionally installed
while observing the manufacturer's instructions.

Art. No.: _____
Material: _____ .../unit
Labour: _____ .../unit
Total price: _____ .../unit

_____units Schlüter®-KERDI-DRAIN as a
vertical complete set, consisting of:

- Thin-set floor drain Schlüter®-KERDI-DRAIN
DN 50 with integrated odour trap
- Grate/frame combination with design grate
3 of brushed stainless steel, 10 x 10 cm, for
use in: Interior areas

... to be supplied and professionally installed
while observing the manufacturer's instructions.

Art. No.: _____
Material: _____ .../unit
Labour: _____ .../unit
Total price: _____ .../unit

_____units Schlüter®-KERDI-DRAIN KD BH
50 B as a horizontal floor drain set without
odour trap,

- Drain DN 50 (50 mm) with rigid fitting for
use in: Exterior areas

... to be supplied and professionally installed
while observing the manufacturer's instructions.

Art. No.: _____
Material: _____ .../unit
Labour: _____ .../unit
Total price: _____ .../unit

_____units Schlüter®-KERDI-DRAIN KD BH
50 B as a horizontal floor drain set without odour
trap, drain DN 50 (50 mm) with rigid connector,
application areas: Exterior

... to be supplied and professionally installed
while observing the manufacturer's instructions.

Art. No.: _____
Material: _____ .../unit
Labour: _____ .../unit
Total price: _____ .../unit

_____units Schlüter®-KERDI-DRAIN KD
BH 50 MSBB as a horizontal floor drain set
without odour trap with 2-level drainage for
connection to the lower waterproofing plane
and the surface, with a waterproofing flange,
Schlüter®-TROBA-PLUS 8 drainage collar and a
perforated insert element, drain DN 50 (50 mm),
application areas: Exterior

... to be supplied and professionally installed
while observing the manufacturer's instructions.

Art. No.: _____
Material: _____ .../unit
Labour: _____ .../unit
Total price: _____ .../unit



_____units Schlüter®-KERDI-DRAIN KD BH 50 ASLVB as a horizontal floor drain set without odour trap with 2-level drainage for connection to the lower waterproofing plane and the surface, with a waterproofing flange, Schlüter®-TROBA-PLUS 8 drainage collar, perforated insert element, and insert for loose installation, incl. design grate R15 ED1 S, drain DN 50 (50 mm),

application areas: Exterior

... to be supplied and professionally installed while observing the manufacturer's instructions.

Art. No.: _____

Material: _____ .../unit

Labour: _____ .../unit

Total price: _____ .../unit

_____units Schlüter®-KERDI-DRAIN KD BV 50 GV as a vertical thin-set floor drain with odour trap, drain DN 50 (50 mm),

application area: Interior

... to be supplied and professionally installed while observing the manufacturer's instructions.

Art. No.: _____

Material: _____ .../unit

Labour: _____ .../unit

Total price: _____ .../unit

_____units Schlüter®-KERDI-DRAIN KD BV 50 GVB as a vertical floor drain set with odour trap, drain DN 50 (50 mm),

application area: Interior areas,

... to be supplied and professionally installed while observing the manufacturer's instructions.

Art. No.: _____

Material: _____ .../unit

Labour: _____ .../unit

Total price: _____ .../unit

_____units Schlüter®-KERDI-DRAIN KD BAV 50 GVB as a vertical floor drain set with odour trap, drain DN 50 (50 mm) with increased drain capacity and/or fire protection requirements, application area: Interior

... to be supplied and professionally installed while observing the manufacturer's instructions.

Art. No.: _____

Material: _____ .../unit

Labour: _____ .../unit

Total price: _____ .../unit

_____units Schlüter®-KERDI-DRAIN KD BV as a vertical thin-set floor drain without odour trap

■ KD BV 50 drain DN50 (50mm)

■ KD BV 70 drain DN70 (75mm)

■ KD BV 100 drain DN100 (110mm)

Application area: Interior/exterior

... to be supplied and professionally installed while observing the manufacturer's instructions.

Art. No.: _____

Material: _____ .../unit

Labour: _____ .../unit

Total price: _____ .../unit

_____units Schlüter®-KERDI-DRAIN KD BV 50 B as a vertical floor drain set without odour trap, drain DN 50 (50 mm),

application area: Exterior

... to be supplied and professionally installed while observing the manufacturer's instructions.

Art. No.: _____

Material: _____ .../unit

Labour: _____ .../unit

Total price: _____ .../unit

_____units Schlüter®-KERDI-DRAIN KD BV 50 MSBB as a vertical floor drain set without odour trap with 2-level drainage for connection to the lower waterproofing plane and the surface, with a waterproofing flange, Schlüter®-TROBA-PLUS 8 drainage collar and a perforated insert element, drain DN 50 (50 mm),

application areas: Exterior areas

... to be supplied and professionally installed while observing the manufacturer's instructions.

Art. No.: _____

Material: _____ .../unit

Labour: _____ .../unit

Total price: _____ .../unit

_____units Schlüter®-KERDI-DRAIN KD BV 50 ASLVB as a vertical floor drain set without odour trap with 2-level drainage for connection to the lower waterproofing plane and the surface, with a waterproofing flange, Schlüter®-TROBA-PLUS 8 drainage collar, perforated insert element, and insert for loose installation, incl. design grate R15 ED1 S, drain DN 50 (50 mm),

application areas: Exterior areas

... to be supplied and professionally installed while observing the manufacturer's instructions.

Art. No.: _____

Material: _____ .../unit

Labour: _____ .../unit

Total price: _____ .../unit

Text template for accessories:

_____units Schlüter®-KERDI-DRAIN 15 R as a renovation insert made of stainless steel for installation in new tile coverings installed over existing drains

... to be supplied and professionally installed while observing the manufacturer's instructions.

Art. No.: _____

Material: _____ .../unit

Labour: _____ .../unit

Total price: _____ .../unit

_____units Schlüter®-KERDI-DRAIN KD 15 RL as a two-piece stainless steel renovation frame and two-piece plastic grate for subsequent installation over an existing downspout ø 50 - 75 mm

... to be supplied and professionally installed while observing the manufacturer's instructions.

Art. No.: _____

Material: _____ .../unit

Labour: _____ .../unit

Total price: _____ .../unit

_____units Schlüter®-KERDI-DRAIN KD BS as a fire protection insert in accordance with approval number for installation in the floor drain set KD BAV 50 GVB to prevent the spread of fire for a fire resistance period R120, R90, R60, R30 (depending on the ceiling)

... to be supplied and professionally installed.

Art. No.: _____

Material: _____ .../unit

Labour: _____ .../unit

Total price: _____ .../unit

_____units Schlüter®-KERDI-DRAIN KD ZBS as a fire protection gasket in accordance with approval number as a fire insulation seal of the core hole drilling (ø 160 mm) and for the simultaneous prevention of sound bridges in conjunction with floor drain set KD BAV 50 GVB

... to be supplied and professionally installed.

Art. No.: _____

Material: _____ .../unit

Labour: _____ .../unit

Total price: _____ .../unit

